

ORGANIZATION CHART



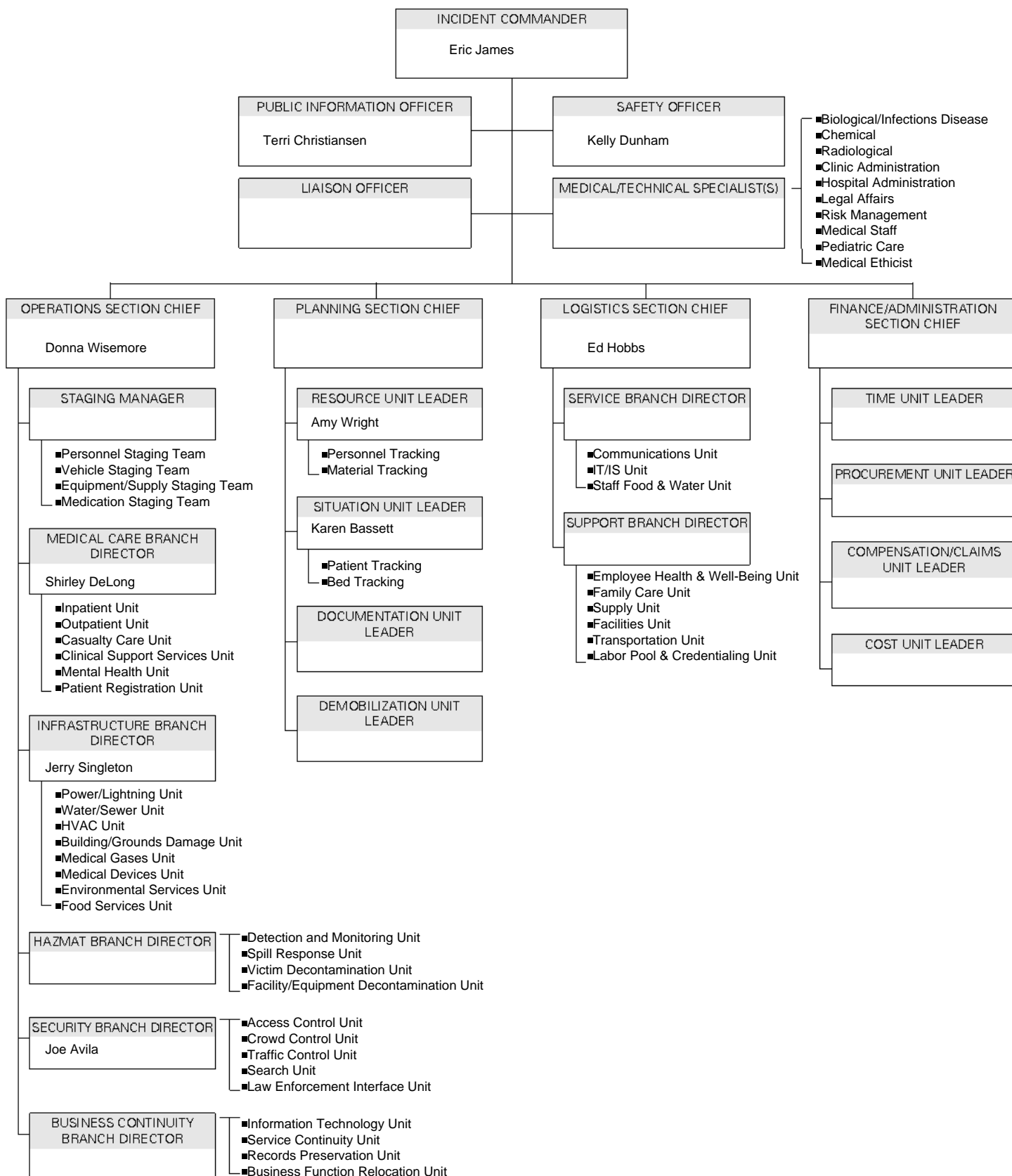
1. INCIDENT NAME

2. DATE PREPARED

3. TIME PREPARED

4. OPERATIONAL PERIOD DATE/TIME

5. ORGANIZATIONAL CHART



6. FACILITY NAME

PURPOSE: DOCUMENT HICS POSITIONS ASSIGNED. ORIGATION: INCIDENT COMMANDER.

COPIES TO: COMMAND STAFF, GENERAL STAFF, BRANCH DIRECTORS, UNIT LEADERS, AND DOCUMENTATION UNIT LEADER.

HICS 207

HICS 203 (SUPPLEMENTAL-1) – ORGANIZATION ASSIGNMENT LIST		Operations Section	
1. INCIDENT NAME	2. DATE PREPARED	3. TIME PREPARED	4. OPERATIONAL PERIOD DATE/TIME
POSITION		NAME / AGENCY	
5. Staging (Operations Section)			
Personnel Staging team			
Vehicle Staging team			
Equipment/Supply Staging team			
Medication Staging team			
6. Medical Care Branch (Operations Section)			
Inpatient Unit			
Outpatient Unit			
Casualty Care unit			
Clinical Support Services Unit			
Mental Health Unit			
Patient Registration Unit			
7. Infrastructure Branch (Operations Section)			
Power/Lighting Unit			
Water/Sewer Unit			
HVAC Unit			
Building/Grounds Damage Unit			
Medical Gasses Unit			
Medical Devices Unit			
Environment Services Unit			
Food Services Unit			
Resources Unit			
8. Hazmat Branch (Operations Section)			
Detection and Monitoring Unit			
Spill Response Unit			
Victim Decontamination Unit			
Facility/Equipment Decontamination Unit			
9. Security Branch (Operation Section)			
Access Control Unit			
Crowd Control Unit			
Traffic Control Unit			
Search Unit			
Law Enforcement Interface Unit			
10. Business Continuity Branch (Operation Section)			
Information Technology Unit			
Service Continuity Unit			
Records Preservation Unit			
Business Function Relocation Unit			
11. Agency Representative (in Hospital Command Center)			
Agency			
12. Hospital Representative (in External EOC)			
External Location			
13. PREPARED BY (RESOURCES UNIT LEADER)			
Amy Wright			
14. FACILITY NAME			

HICS 203 (SUPPLEMENTAL-2) – ORGANIZATION ASSIGNMENT LIST			
1. INCIDENT NAME	2. DATE PREPARED	3. TIME PREPARED	4. OPERATIONAL PERIOD DATE/TIME
POSITION	NAME / AGENCY		
5. Medical/Technical Specialist Section			
Medical/Technical Specialist (Biological/Infectious Disease)			
Medical/Technical Specialist (Chemical)			
Medical/Technical Specialist (Radiological)			
Medical/Technical Specialist (Clinic Administration)			
Medical/Technical Specialist (Hospital Administration)			
Medical/Technical Specialist (Legal Affairs)			
Medical/Technical Specialist (Risk Management)			
Medical/Technical Specialist (Medical Staff)			
Medical/Technical Specialist (Pediatric Care)			
Medical/Technical Specialist (Medical Ethicist)			
6. Planning Section			
Chief			
Resources Unit	Amy Wright		
Personnel Tracking			
Material Tracking			
Situation Unit	Karen Bassett		
Patient Tracking			
Bed Tracking			
Documentation Unit			
Demobilization Unit			
Other Branch:			
8. Logistics Section			
Chief	Ed Hobbs		
Service Branch			
Communications Unit			
IT/IS Unit			
Staff Food & Water Unit			
Support Branch			
Employee Health & Well being			
Family care Unit			
Supply Unit			
Facilities Unit			
Transportation Unit			
Labor Pool & Credentialing Unit			
Other Branch:			
10. Agency Representative (in Hospital Command Center)			
Agency			
11. Hospital Representative (in External EOC)			
External Location			
12. PREPARED BY (RESOURCES UNIT LEADER)			
Amy Wright			
13. FACILITY NAME			